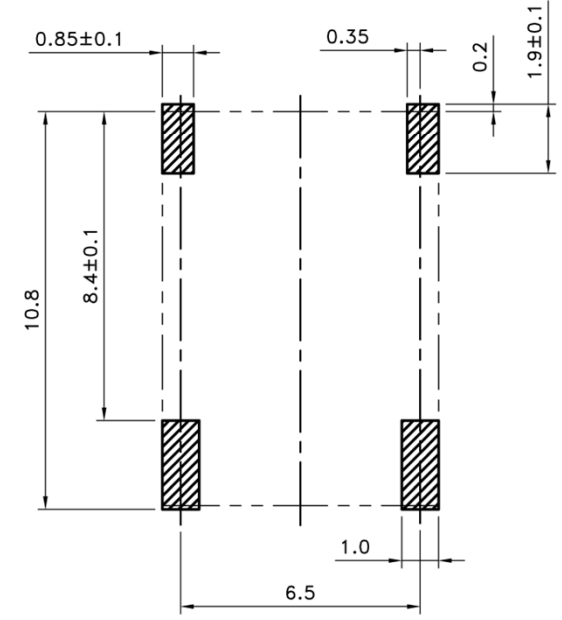
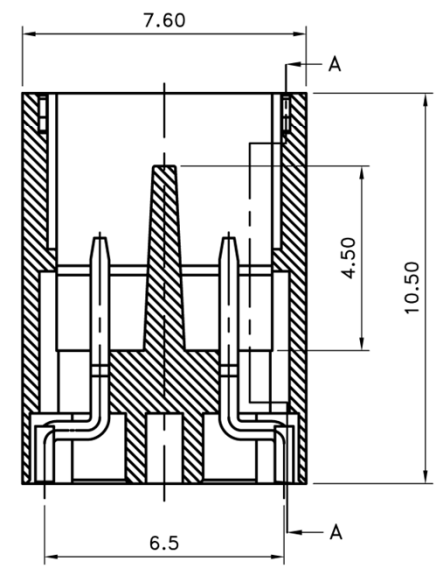
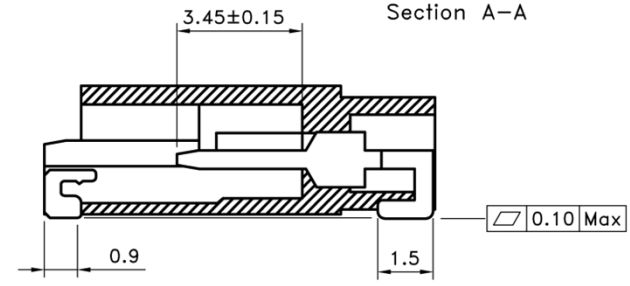
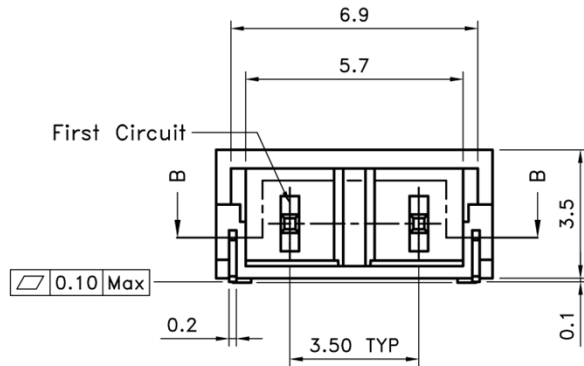


CUSTOMER COPY

REV.	DESCRIPTION	APP.	DATE
A	NEW DESIGN	Amos	2012-05-23

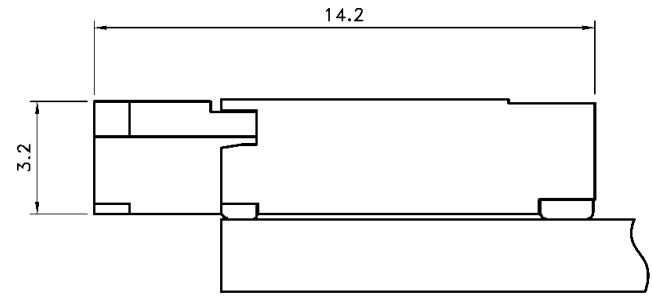


■ SPECIFICATIONS

- Voltage Rating : 1,400V AC/DC
- Current Rating : 1A AC/DC.
- Withstanding Voltage : 3,800V AC/minute
- Insulation Resistance : 1,000MΩ min.
- Temperature Range : - 25°C to + 85°C
- Contact Resistance : 20mΩ max.

■ WAFER

- Part No. : JS-2012-02 , JS-2012-02(NM)
- Poles : 2 (DIP Type)
- Material : Finish : JS-2012-02 -Tin Plated , JS-2012-02(NM)-Mat-Tin Plated
- Contact : Phos. Bronze,
- Base : Nylon 9T UL94V-0
- Q' ty : 1,200 pcs/ Tape & Reel



Assembly Layout (REF.)



鈺滿榮企業股份有限公司 ACMELUX CO., LTD.

TEL:886-2-85124595

FAX:886-2-85124322

0.0±0.30	SCALE: 1:1	TITLE:	PART NO:
0.00±0.20	UNIT: mm	2Pin Pitch 3.5mm 90° SMT Type	APP BY: <i>Hung</i>
0.000±0.1		Wafer Connector	CHK BY: <i>Cheryl</i>
		MATL: RoHS	DR BY: <i>Amos</i>
		DWG. NO. C1248000021	A244